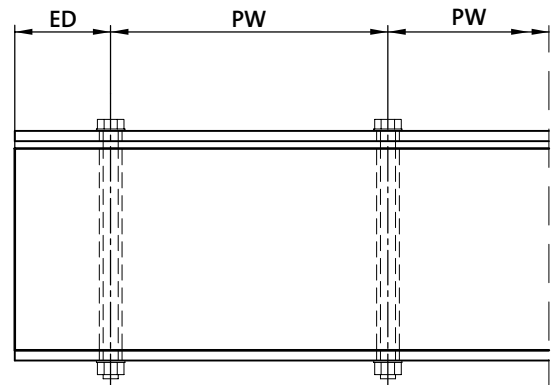
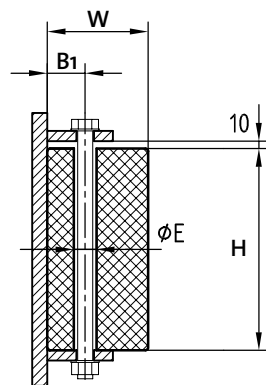




## HD-PE SLIDING FENDERS

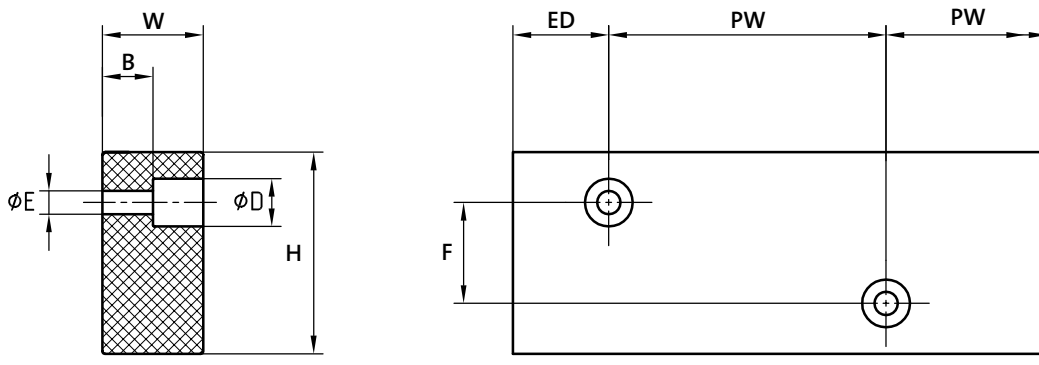
HD-PE Sliding Fenders are made by extrusion from recycled Polyethylene with glassfiber reinforcement for high strengt and impact resistance. The main advantages compared with other materials are:

- ▶ high impact strength
  - ▶ low friction coefficient
  - ▶ high abrasion resistance
  - ▶ UV-resistant
  - ▶ available cross sections
  - ▶ Ozone resistant
  - ▶ non-conducting (optional)
  - ▶ 100% recyclable
  - ▶ non-rottening
  - ▶ beltings for inland barges
  - The main applications are:
    - ▶ sliding strips
    - ▶ lock walls
    - ▶ quay wall protection
- The standard colour is black.



### PHYSICAL + MECHANICAL PROPERTIES OF HD-PE

HD-PE Properties			
Property	Test Method	Typical Results	Unit
Density	ISO 1183-1	0.90-0.95	g / cm <sup>3</sup>
Molecular Weight	Light diffusion method	~200,000	g / mol
Dynamic Friction	-	0.20-0.25	-
Yield Strength	DIN 53504	10-15	Mpa
Shore Hardness	DIN 53505	48-50	Shore D
Abrasion Index	ISO / DIS 15527 (Draft) FQ1000-V = 100	~400	-
Operating Temperature	-	-20 to +70	°C
Thermal Expansion	DIN 53752	2 x 10 <sup>-4</sup>	K <sup>-1</sup>



HD-PE FENDER DIMENSIONS

H [mm]	W [mm]	L [mm]	B [mm]	B <sub>1</sub> [mm]	D [mm]	E [mm]	F [mm]	ED [mm]	PW [mm]	Flat Bar [mm]	Bolt Size	Weight / m [kg]
50	50	5500	25	-	32	16	0	75~125	250~300	-	M 12	2.3
60	60	5500	30	-	32	16	0	75~125	250~300	-	M 12	3.3
70	50	2500	25	-	32	16	0	75~125	250~300	-	M 12	3.3
70	70	6500	35	-	32	16	0	75~125	250~300	-	M 12	4.5
80	60	5000	30	-	32	16	0	75~125	250~300	-	M 12	4.5
100	50	5500	25	-	32	16	0	75~125	250~300	-	M 12	4.7
100	65	5500	30	-	32	16	0	75~125	250~300	-	M 12	6.1
100	100	6000	50	32	32	16	0	75~125	250~300	50 x 6	M 12	9.3
120	80	5000	40	-	40	20	0	100~150	300~350	-	M 16	8.9
120	120	6000	60	40	40	20	0	100~150	300~350	65 x 10	M 16	13.4
140	70	5500	35	-	40	20	0~50	100~150	300~350	-	M 16	9.1
160	70	5000	35	-	40	20	0~70	100~150	300~350	-	M 16	10.4
160	160	6000	80	40	40	20	0~80	100~150	300~350	80 x 10	M 16	24.1
170	120	5500	60	40	40	20	0~80	100~150	300~350	65 x 10	M 16	19.0
175	150	4000	75	40	50	23	0~80	125~175	350~450	80 x 10	M 20	24.2
180	70	5000	35	-	50	23	0~80	125~175	350~450	-	M 20	11.7
180	180	6000	90	46	50	23	0~80	125~175	350~450	80 x 10	M 20	30.2
190	110	5000	55	46	50	23	0~90	125~175	350~450	80 x 10	M 20	19.4
200	75	5000	35	46	50	23	0~100	125~175	350~450	-	M 20	14.0
200	100	6000	50	46	50	23	0~100	125~175	350~450	80 x 10	M 20	18.6
200	150	5500	75	46	50	23	0~100	125~175	350~450	80 x 10	M 20	27.9
200	200	6000	100	46	50	23	0~100	125~175	350~450	80 x 10	M 20	37.6
210	165	2000	80	46	50	23	0~130	150~200	450~550	80 x 10	M 20	31.9
250	150	6500	75	46	65	28	0~130	150~200	450~550	80 x 10	M 24	34.8
250	160	5000	80	46	65	28	0~130	150~200	450~550	80 x 10	M 24	37.2
250	250	5000	125	56	65	28	0~130	150~200	450~550	100 x 10	M 24	58.1
300	100	5500	50	-	65	28	0~160	150~200	450~550	-	M 24	27.9
300	210	5000	105	56	70	36	0~160	175~225	500~600	100 x 12	M 30	58.6
300	300	5000	105	72	70	36	0~160	175~225	500~600	100 x 12	M 30	83.7
440	160	2000	80	-	70	36	0~160	175~225	500~600	-	M 30	64.8